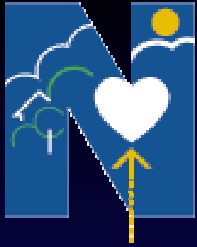


Adelaide Northern Division of General Practice

*Partners in Quality Practice*

**Not the AFL Final**



# Division Profile Continued

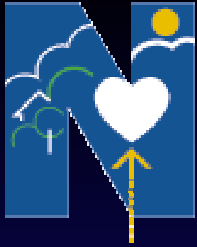
## ✓ High Disadvantage

- Elizabeth 786
- Salisbury 934 (SEIFA)

✓ Diabetes 4.1% (SA 3.8%)

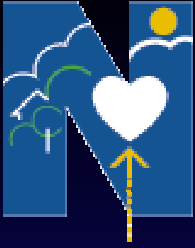
✓ Asthma 16.8% (SA 13.4%)

✓ DV assessment .27% (SA .19%)



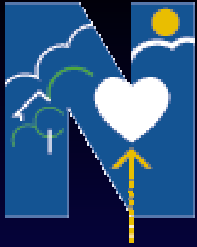
# Alternatives to Corporatisation

- ✓ “Feasibility to establishing an entity owned and operated by GPs as an alternative to *Corporatisation* of general practice”
- ✓ Literature Study/Options Paper
- ✓ Extensive consultation (solos, group male/female)



# Consultation Process

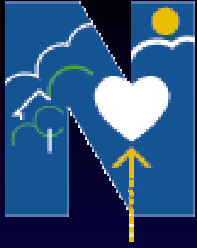
- ✓ Little support for forming new entity
- ✓ Maintain autonomy (practice & clinical)
  - Human resource management (reception & nursing)
  - Medical & surgical purchasing
  - Equipment sharing
  - IT support
  - Sickness / AL cover
- ✓ Identified that Division may be best suited to deliver above services



# Sustainable IT = Sustainable IM

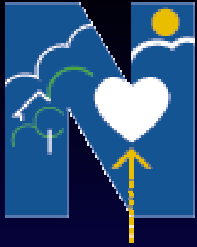


*Partners in Quality Practice*



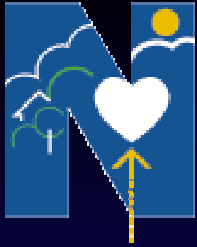
# IT Service Provision

- ✓ 85 % of members currently use computers
- ✓ cost for support services ranged from \$10-\$140/hour (mean \$90)
- ✓ Support services required between 1-10 hours per month (mean 3.2)



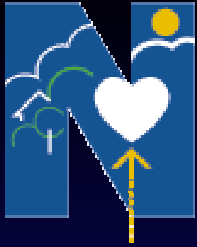
# Type of IT services required

- ✓ Trouble shooting, emergency repairs (86%)
- ✓ Bulk purchasing-hardware (81%)
- ✓ General IT advice (79%)
- ✓ Staff education on maintenance (eg virus updates 77%)
- ✓ Software purchase (67%)



## IT Modeling (cont)

- ✓ Proposed billing rate
  - Technician \$50/hour
- ✓ Number of hours per GP
  - (37.3 hours or \$1865/annum)
- ✓ Current costs \$3456/annum

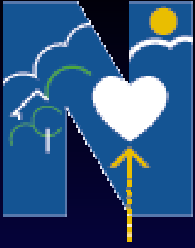


# IT trial

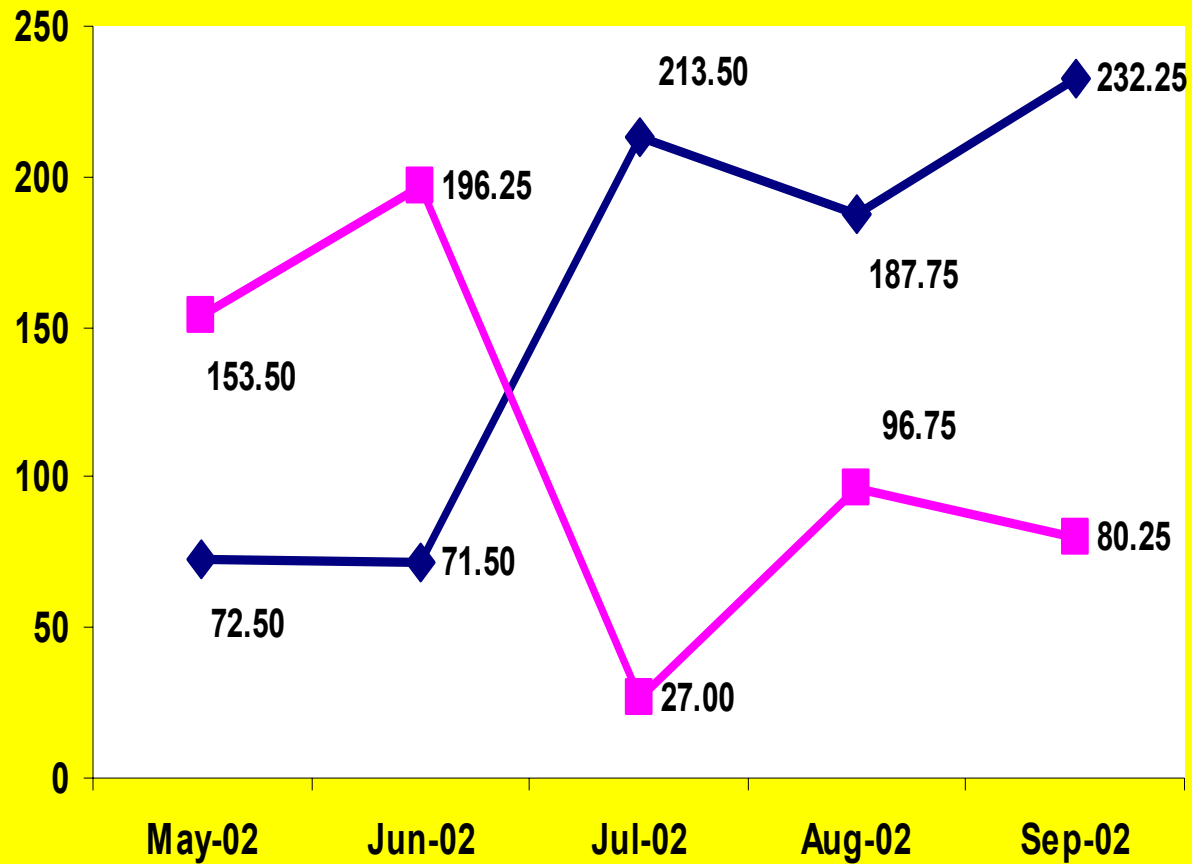
- ✓ IT Interns
- ✓ 10 practices
- +ANDGP



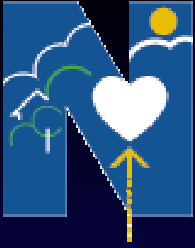
- Assist the computerisation of practices through the provision of practical and unbiased advice
- Assist practices to maximise their PIP relating to IT/IM
- Provide education in the use of IT



# Initial Results



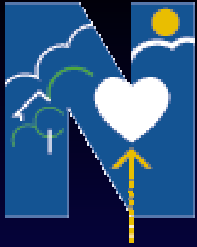
*Partners in Quality Practice*



# How can Practice Nurses help?

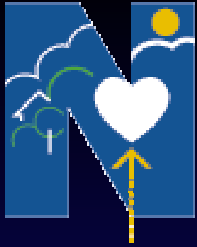


*Partners in Quality Practice*



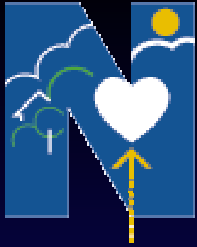
# Practice Nursing

- ✓ 60% of members would purchase practice nurse support (from Division)
- ✓ 30% indicated their interest for long term purchase of nursing services
- ✓ Would pay \$25/hour for service
- ✓ Want support for:
  - Asthma 45 %
  - Diabetes 45%
  - Care Plans/Health Assessments 37%



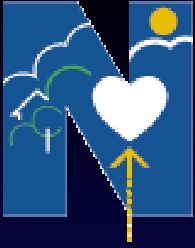
# Nursing Comments

- ✓ Nursing agencies are expensive
- ✓ Want to employ pt nurses without WorkCover or superannuation concerns
- ✓ Flexible hours & duties
- ✓ Would only use for holiday coverage



# Practice Nursing Trial

- ✓ 2 Day orientation
- ✓ 3 RN's placed by Division
- ✓ Tasks include
  - Health assessments
  - Care plans
  - Immunisation
  - Procedural assistance
  - Dressings
  - Asthma screening & education

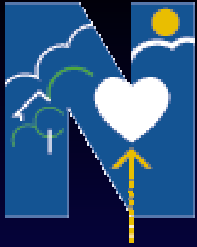


# We have practice Nurses

- ✓ \$30/hour
- ✓ \$50 preparation of Care Plan
- ✓ \$60 preparation of Health assessment



*Partners in Quality Practice*



# Divisions Improving Local Health Care

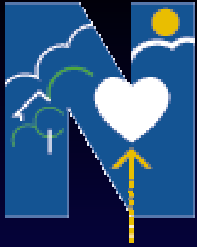
## ✓ Population health

- Mental health
- Diabetes
- Asthma
- Immunisation
- Medication management
- Northern Venture

## ✓ GP Business Services

- IT
- Practice nurses
- Practice management
- Accreditation

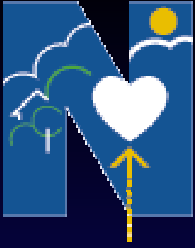
## ✓ Research Initiatives



# Health Partners

- ✓ SA Gov (DHS) (DETE)
  - Community Health, Mental Health, Immunisation, Aged Care, DASC
- ✓ Aboriginal Health (ACCHO)
  - Asthma, CVD
- ✓ Universities
  - Adelaide, Flinders and USA
- ✓ Consumers
  - Asthma, Diabetes, Mental Health, Board of Management
- ✓ Hospitals
  - LMHS, GHS, CDPD, WCH
- ✓ Other Divisions
  - Western, North East, Mid North
- ✓ Other Medical Organisations
  - SEMA, RACGP, AMA, CMA

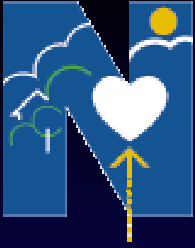
*Partners in Quality Practice*



# Asthma Intervention



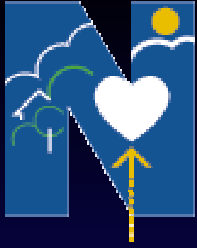
*Partners in Quality Practice*



# Order v's Chaos



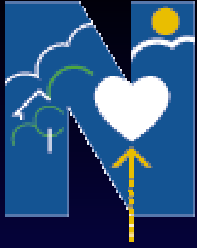
*Partners in Quality Practice*



# Where are we going?

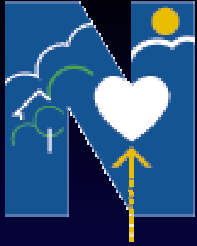
## ✓ Strategic Plan

- Membership and Governance
- Workforce
- Partnerships
- Mental Health
- Population health
- Aged Care
- Indigenous Health
- Practice Capacity



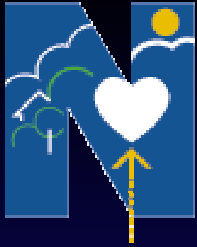
# Membership & Governance

- ✓ Currently 159 Full members (128 m/31 fm)
- ✓ 82 associate members
- ✓ 46 RNs/ 56 practice staff
  
- ✓ Outstanding
  - Membership drive
  - Policy/delegations/PAGs
  - Succession planning



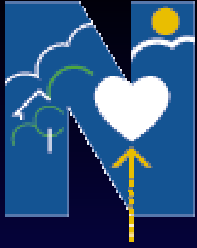
# Workforce

- ✓ HIC 135 FTE for 205, 000 1:1481
- ✓ Survey of practices/GPs
- ✓ Recruitment of OTDs retention of GPs
- ✓ Medicare Plus initiatives
- ✓ Gawler After-hours
  
- ✓ Outstanding
  - Needs assessment
  - Access to allied health/nurses



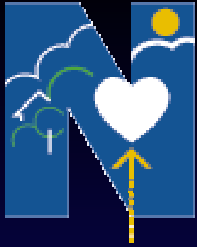
# Partnerships

- ✓ Strategic partnerships are formed
  - State and Commonwealth health, aged care, mental health, Indigenous, universities, schools other Divisions
  - SADI, ADGP, AMA, RACGP, RDWA
  
- ✓ Outstanding
  - Shared health records
  - Avenues of funding



# Mental Health

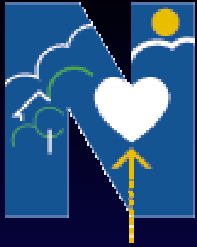
- ✓ Shared care (psychiatry)
- ✓ Education
- ✓ Allied health
- ✓ Suicide prevention
- ✓ Health promotion
  
- ✓ Outstanding
  - Co morbidity (drugs and alcohol)
  - Child and adolescent
  - Aged services/dementia



# Population Health

- ✓ Education
- ✓ Chronic Disease- Diabetes, Asthma
- ✓ Nursing
- ✓ Immunisation
- ✓ Health Promotion (SNAP)
  
- ✓ Outstanding
  - Obesity, CVD
  - Clinical Guidelines Shortcuts
  - Access to allied health for care planning

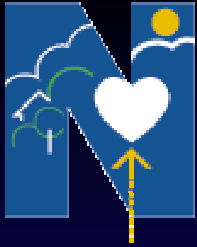
*Partners in Quality Practice*



# Aged Care

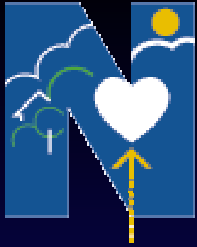
- ✓ Formation of GP panels
- ✓ Development of common referral process
- ✓ Partnerships with other agencies

LGA	1996	2001	2006	2011	2016
Gawler	2393	2753	3312	3769	4463
Playford	6239	7569	8871	10108	12020
Salisbury	8173	10056	12570	15287	19324



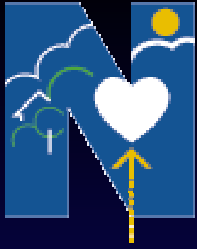
# Indigenous Health

- ✓ MoU draft
- ✓ Asthma funding
  
- ✓ Outstanding
  - Access to aboriginal health workers
  - Funding stream



# Practice Capacity

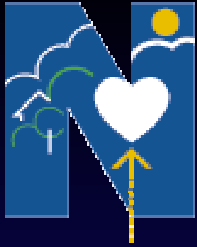
- ✓ Practice Nurses
- ✓ IT services
- ✓ Strategic Planning
- ✓ Research and Development
  
- ✓ Outstanding
  - IT back up
  - Promotion & marketing



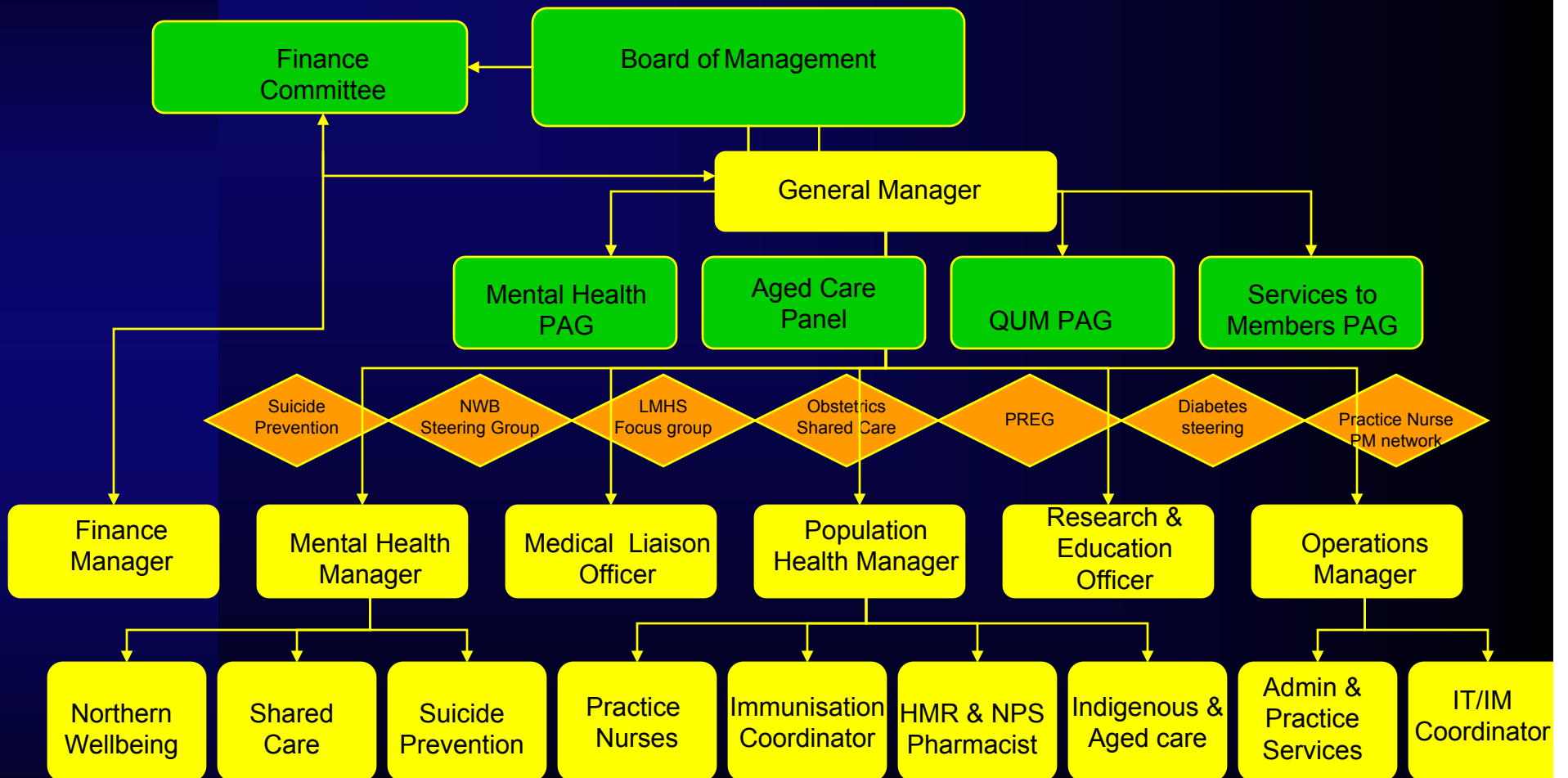
# Eyes on the prize



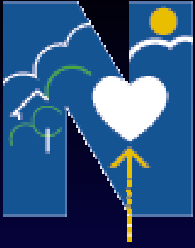
*Partners in Quality Practice*



# Organisational Chart

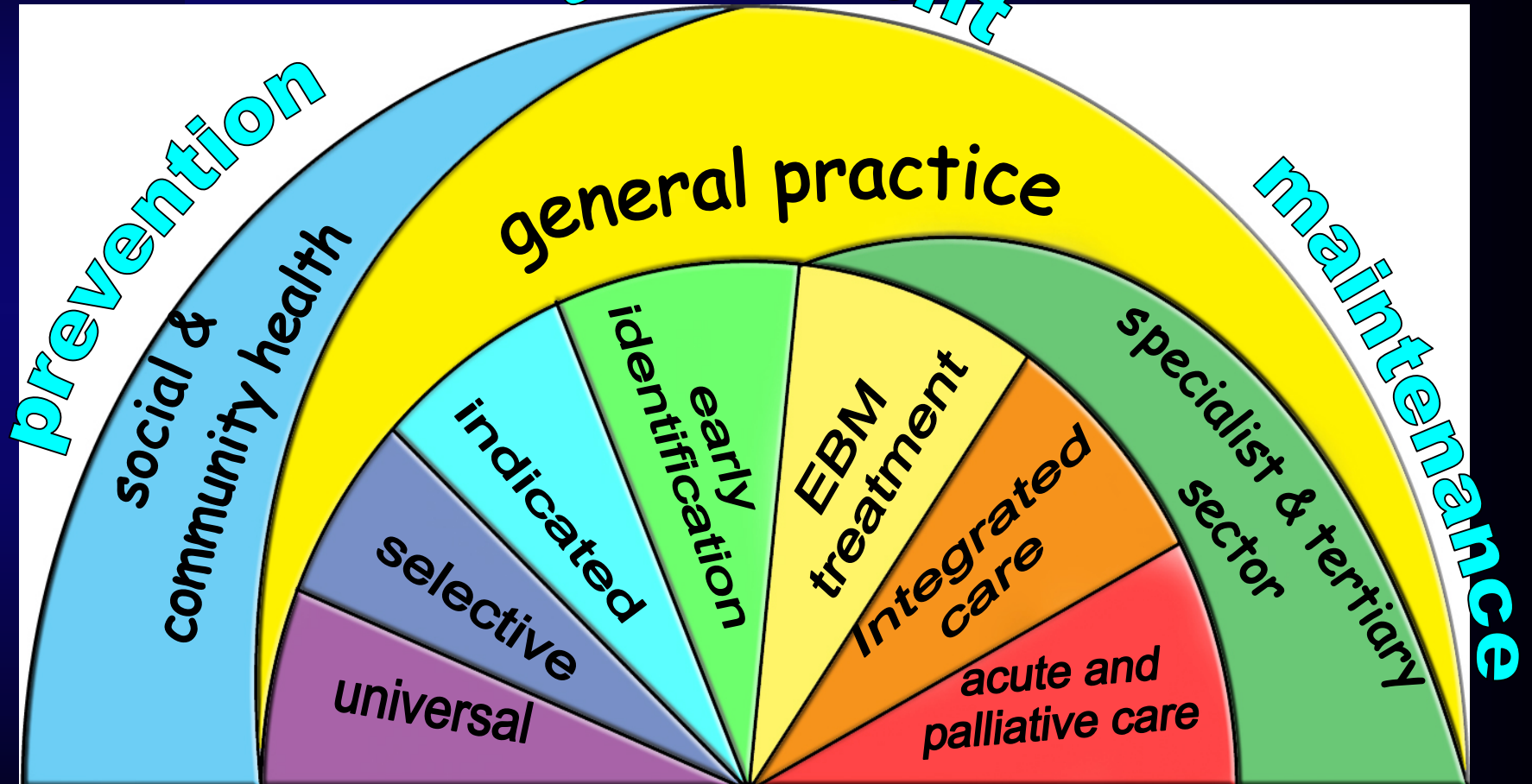


*Partners in Quality Practice*

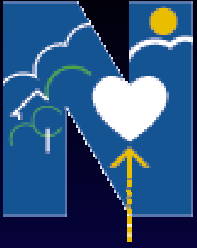


# Innovations of Models

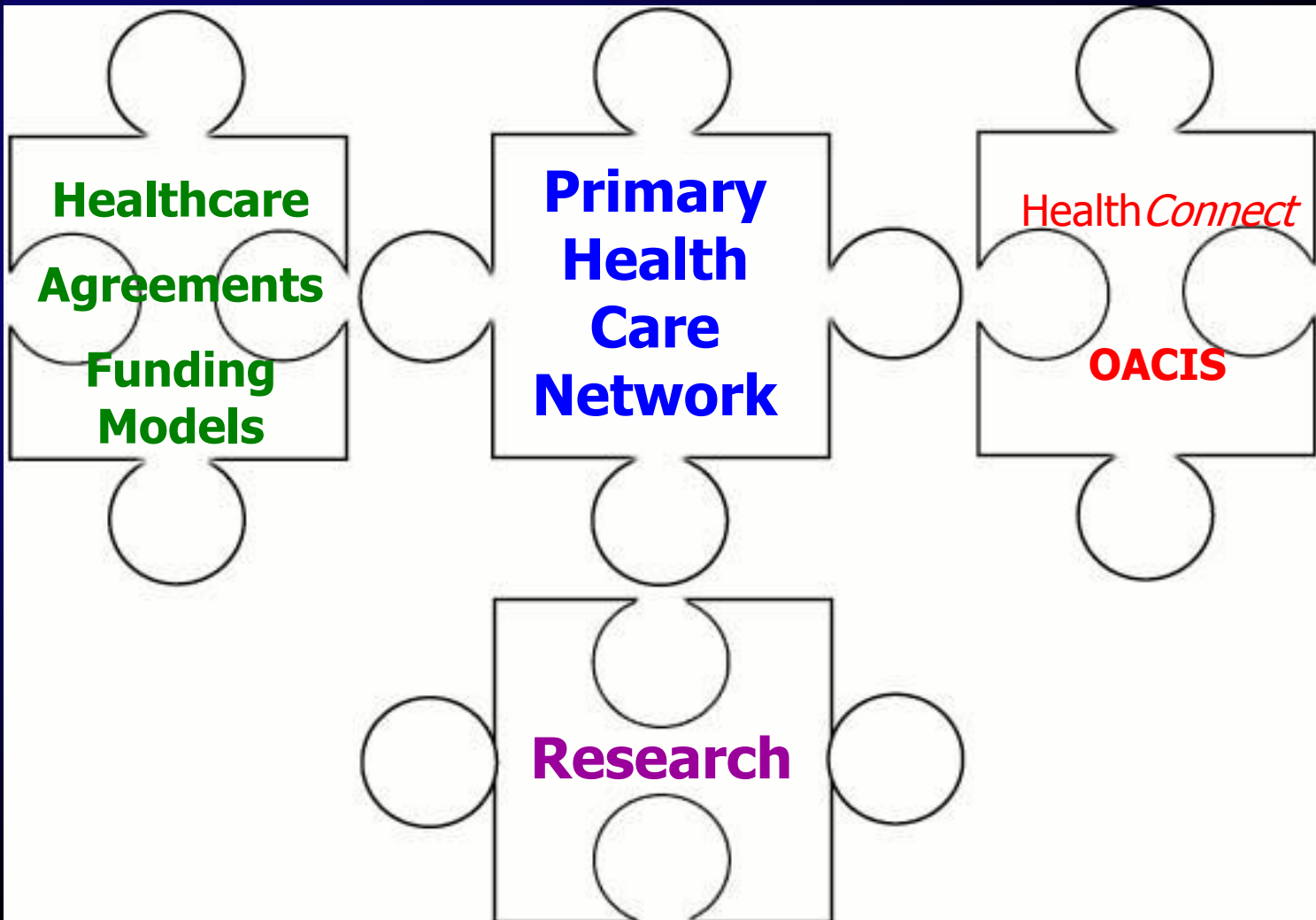
**treatment**

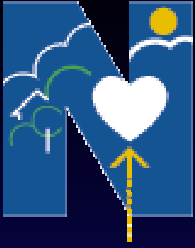


*Partners in Quality Practice*



# Primary Health Care Networks





*Partners in Quality Practice*