

CBDGP Practice Profile Reports

Mr Steve Sant

Chief Executive, Central Bayside Division of
General Practice



takingaction Divisions of General Practice Network Forum 2004



Objectives

- Provide information on our practice profile journey
 - About Us
 - Building on Quality
 - Small Groups
 - Practice Data Profiles and Practice Engagement



About Us - Demographics

- Covers the SE bayside suburbs of Melbourne
- Population 174,000 - significant ageing population (15% <65years)
- ↑ Burden Chronic Disease – Depression, dementia, osteoarthritis, hearing loss, asthma, diabetes, alcohol and drug dependency, COPD, stroke, ischemic heart disease.
- Hospitalisation due to ageing (rehabilitation, chemotherapy, heart failure, respiratory disease)
- ~220 GP members in 54 practices
- 20% solo practices
- 95% clinically computerised with ~ 70% with EHR
- ~12 staff





About Us- Trends

- Bigger or aggregated practices ↓ Solos
- Changes in workforce
 - ↑ employees and ↓ practice owners
 - ↑ part time work ↑ Females
 - ↓ GPs ↑ Age
- ↑ Multidisciplinary Team Approach e.g. practice nurses
- Greater use of information as a population health tool



Building on Quality

- Blueprint for the next 5-10 years
- ~ 5000 hours GP consultation across 6 Divisions
- Comprehensive international literature review/Study tours
- Consumer and health care provider workshops
- National stakeholder workshops
- Undertaken February 01 to September 01



Patient Health Outcomes



Continuous Quality Improvement Model	
Population health approach	Small group education and peer review
Illness and disease management	Practice self analysis
Resource management	Divisional/Regional data analysis

IM flow

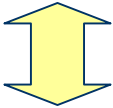
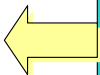
Finance

- GP service Incentive payments
- Practice payments
- Practice viability



Capability

- IM/IT
- Practice Nurses & Allied Health Team
- Planning
- Practice Management Support and Redesign



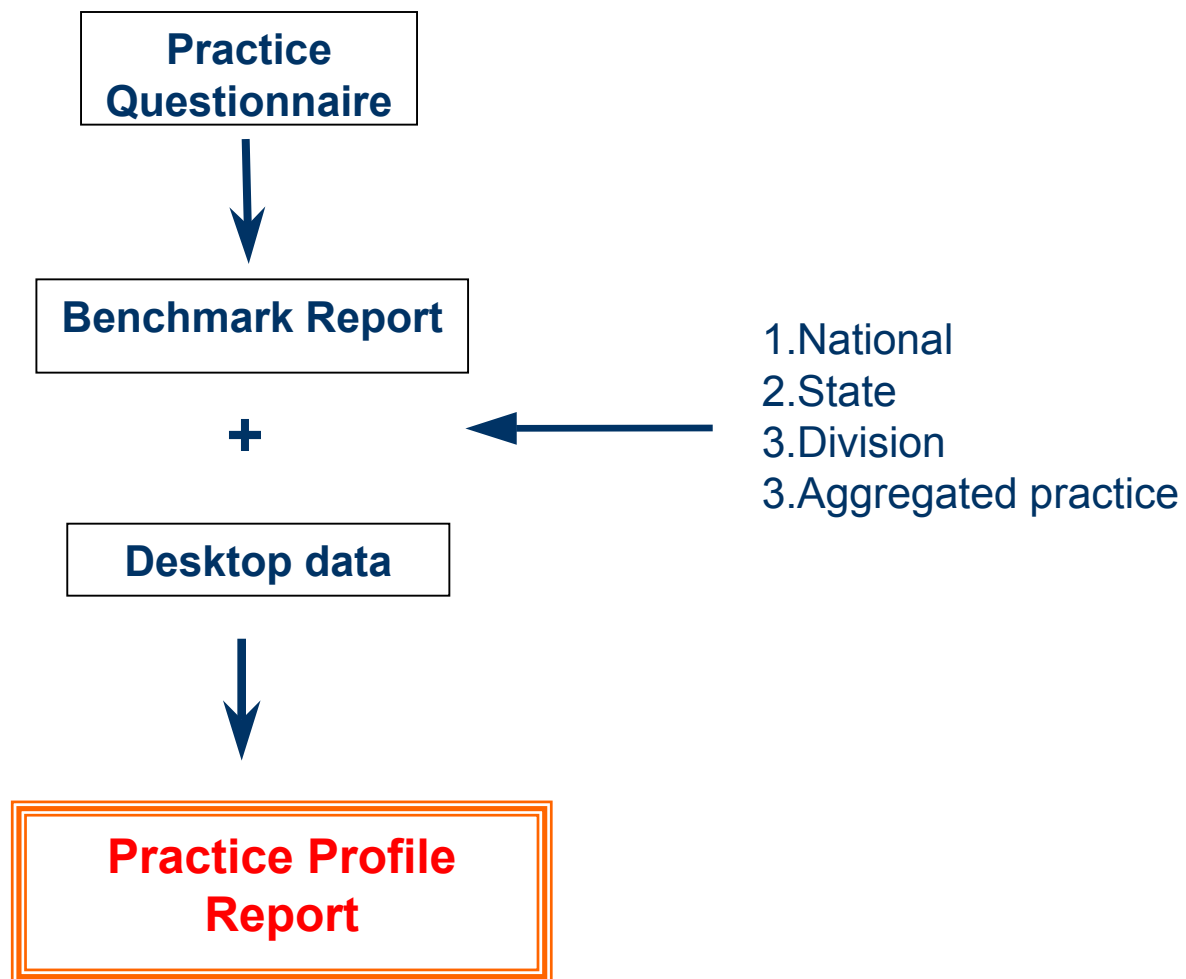
Division Support and Stewardship

Data Management Reference Group

- 4 GP's, Project Manager & CEO
- Develop strategies to enhance the development of Divisional members to undertake activities related to data and population health management
- Develop a benchmarking report of the management of information within CBDGP



Process



Contents of Practice Profile Report

- General Information
 - Practice profile -staff, special interest areas & services
- CBDGP socio-demographic profile
- Practice profile
 - Patient Population
 - Clinical Profile
- Quality of desktop data
 - Policies and protocols
- Prescribing analysis



Key messages

1. **Quality work practices** in terms of coding consistency. (quality data in = quality data out)
2. **Alignment** of patient services between practice and practice population profiles
3. **Systems change** may be required to support this approach
4. **Practical applications** of database management to general practice

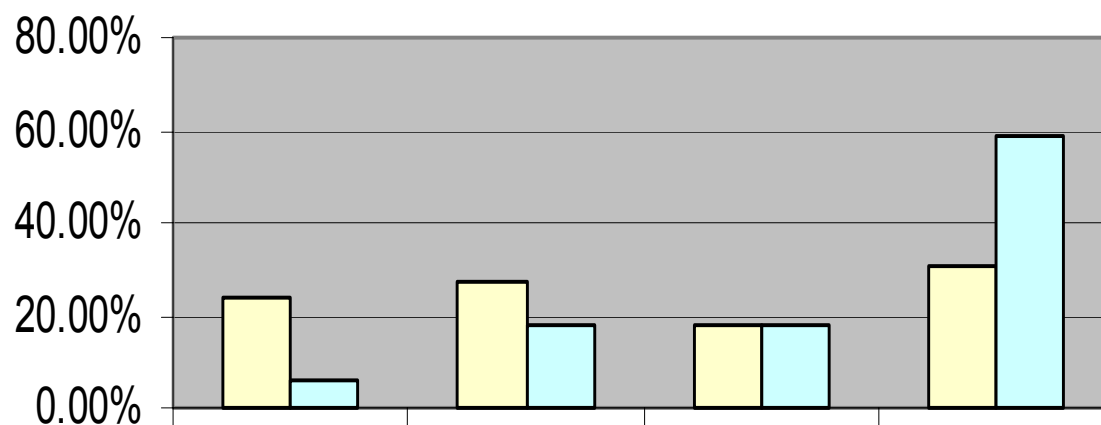


Profile

*No. practices 17 (34%)

*No. GPs 67 (35.2%)

Profile of CBDGP v Respondents



	Solo	Two-Three	Four-Five	Greater than and equal to
■ % of Total possible w/i DGP	23.64%	27.27%	18.18%	30.91%
■ % Report	5.88%	17.65%	17.65%	58.82%

Practice Population Profile

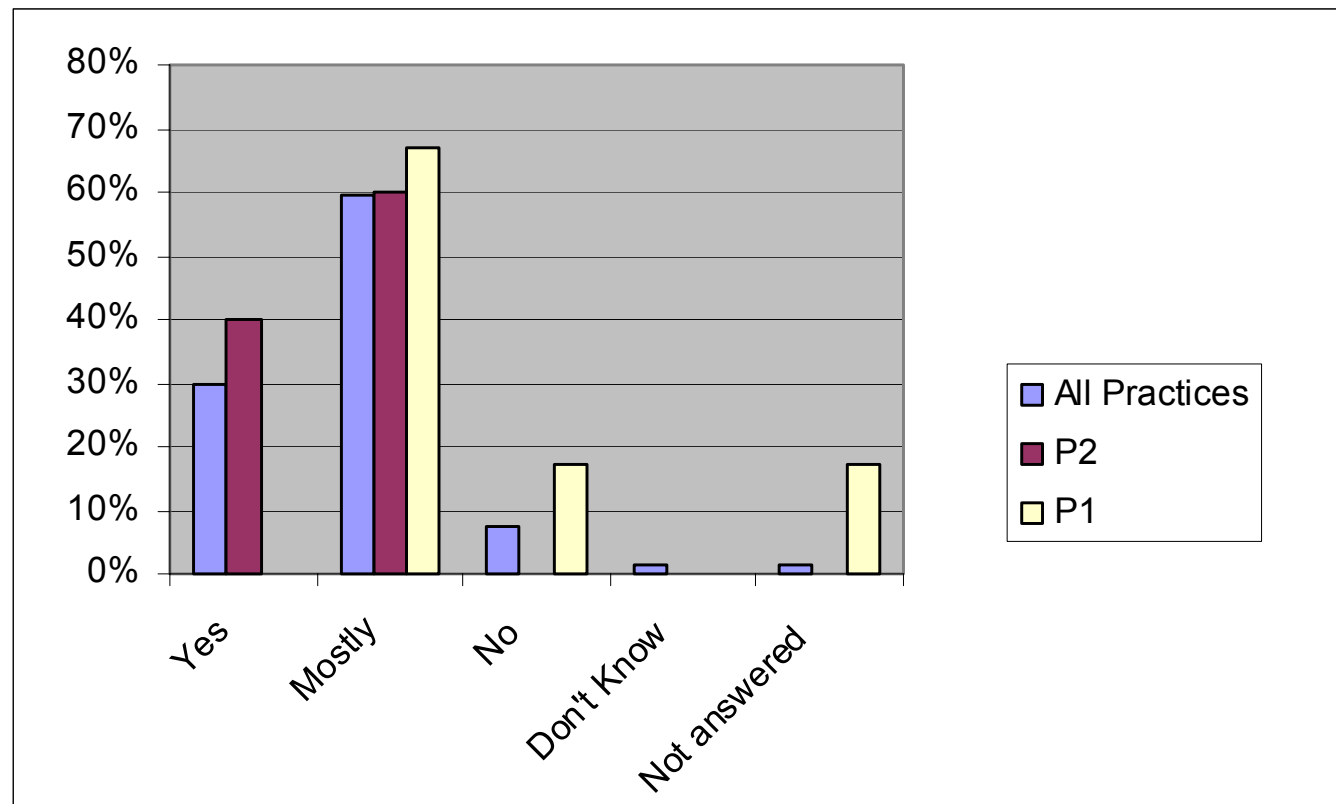
Characteristics of practice population – Practice 2	Number	% of Practice population
Total practice population	14,295	100%
Total number of male patients	7847	55%
Total number of female patients	6452	45%
All patients who have smoking recorded	542	7%
Number of patients with an allergy to medication recorded	2541	18%
Number of patients with 'diabetes' as a condition recorded	362	3%

- Estimated smoking prevalence in Central Bayside is 18.4%
- Estimated diabetes prevalence is 8.7%

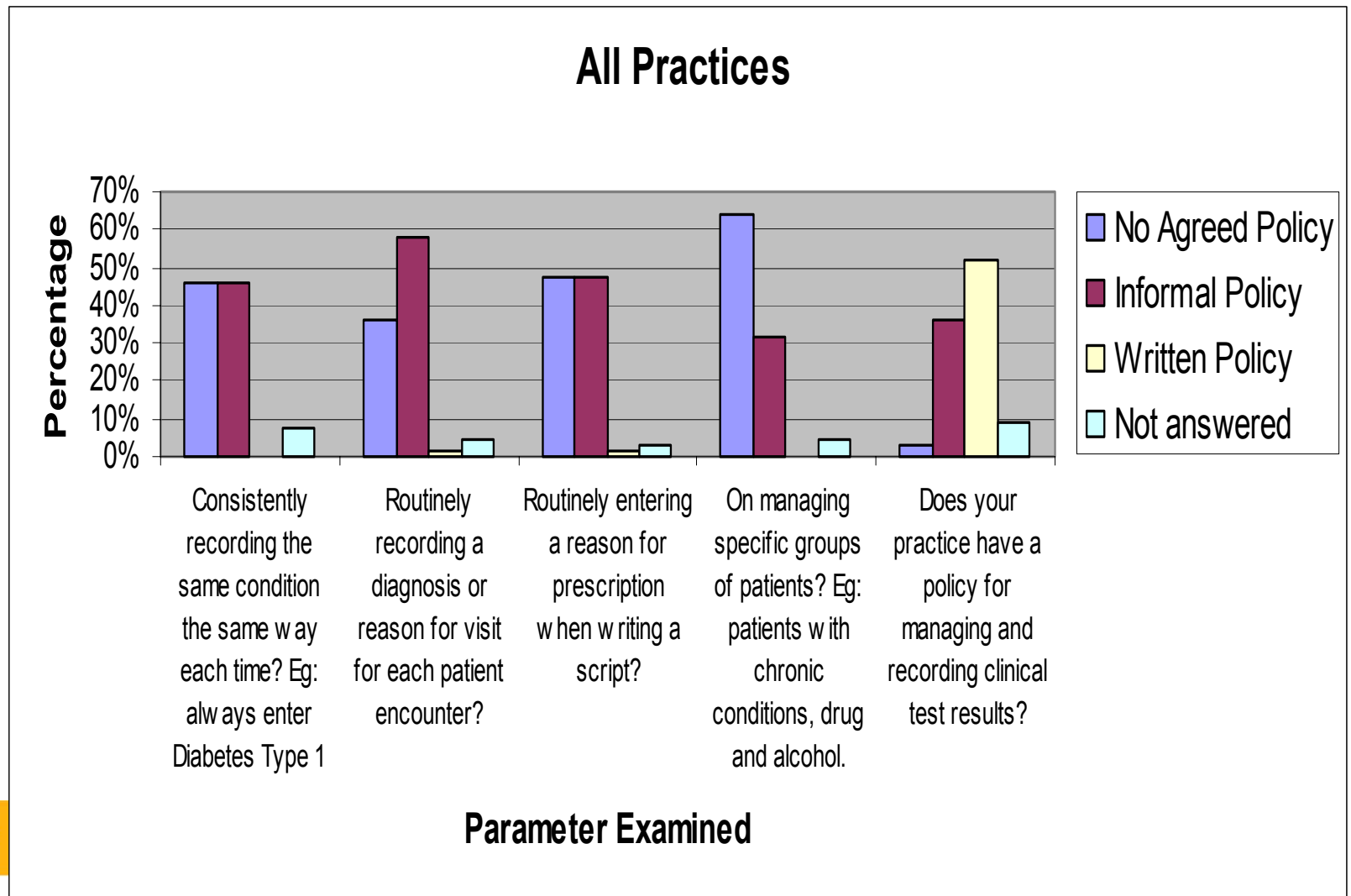


Recording of Diagnosis

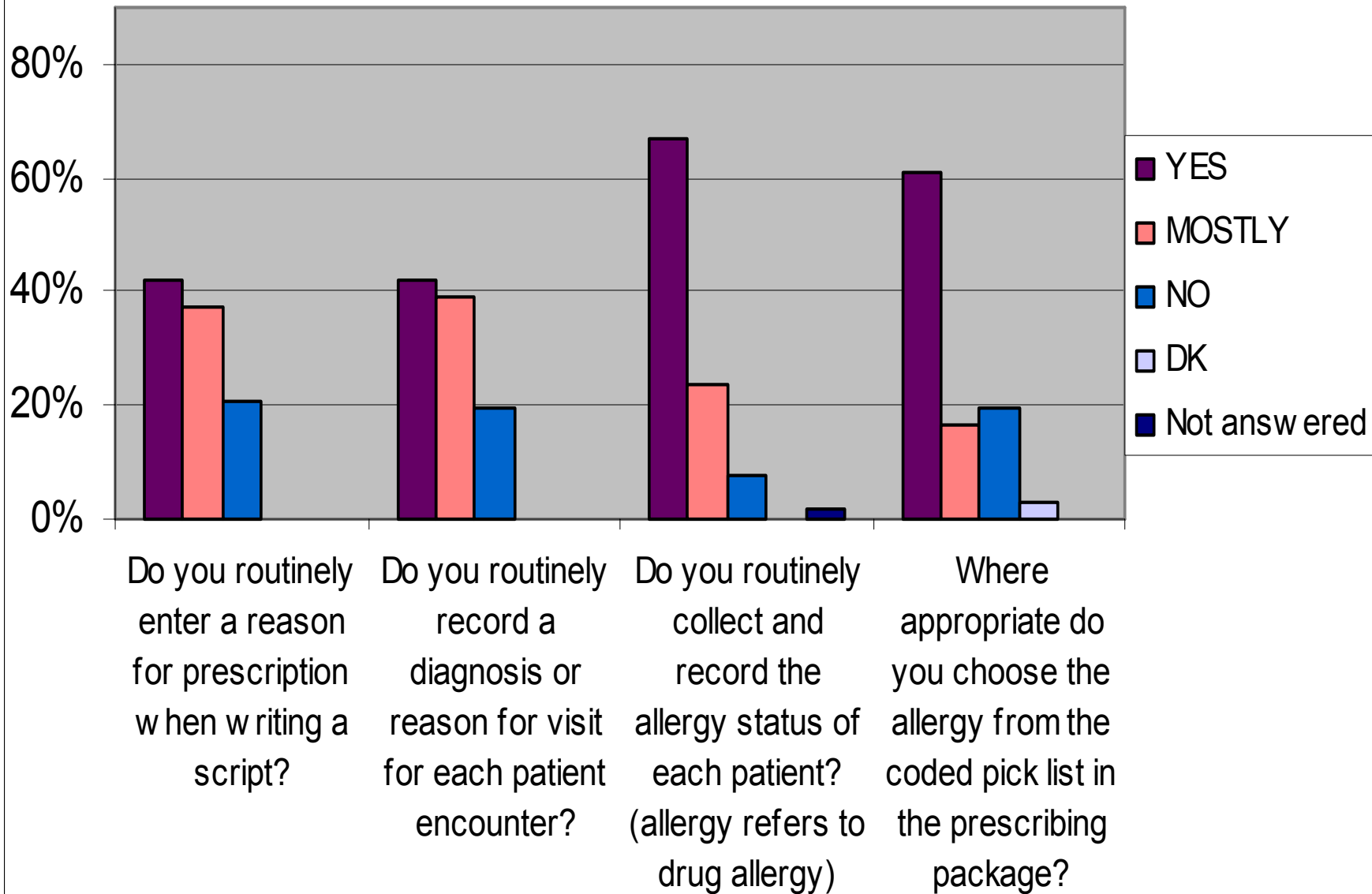
- Q2A: Do you consistently record the same condition the same way each time?



Policies & protocols



All Practices -data quality profile



Profile Reports

- Strong vehicle for change utilising Small Groups
- Facilitates GP engagement
- Key messages:
 - Quality work practices in terms of coding consistency. (quality data in = quality data out)
 - Alignment of patient services with population profiles
 - Practical application of database management
- Potential is enormous i.e. Prescribing patterns
- The Journey continues





Central Bayside

Division of General Practice Ltd.