



**CANNING
DIVISION**
OF GENERAL PRACTICE LTD

General Practice Nurses

Enhancing Quality of Care in General Practice

Who is a general practice nurse?

A registered or enrolled nurse working in general practice.

How does a general practice nurse add value to the practice?

A general practice nurse complements the role of the general practitioner and builds capacity in the practice by:

Providing clinical nursing services in the general practice context through:

- ▶ Triage
- ▶ Diagnostic services
- ▶ Assessment (including health assessment of people over 75 years)
- ▶ Therapeutic care and treatment
- ▶ Wound care
- ▶ Clinical data management

Coordinating patient services through:

- ▶ Networking with community and allied services
- ▶ Sustaining continuity of care
- ▶ Planning and management of care
- ▶ Providing information and feedback between the services, patients and the general practitioner
- ▶ Patient advocacy

Managing the clinical environment by maintaining professional standards and legislative requirements:

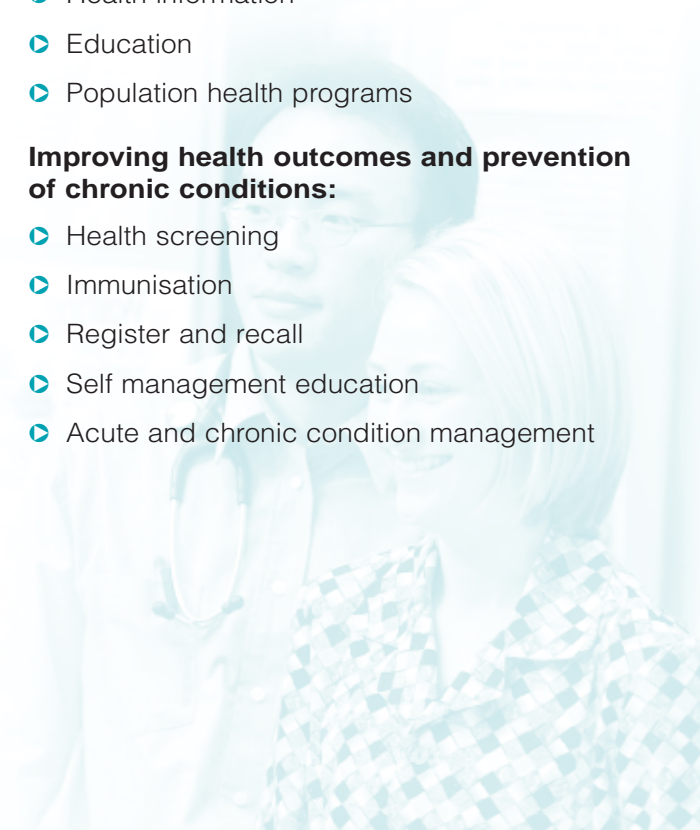
- ▶ Accreditation
- ▶ Infection control and sterilisation
- ▶ Cold chain monitoring
- ▶ Clinical records management
- ▶ Maintenance of medical supplies
- ▶ Occupational health and safety

Promoting health and education to patients, carers and the community:

- ▶ Health information
- ▶ Education
- ▶ Population health programs

Improving health outcomes and prevention of chronic conditions:

- ▶ Health screening
- ▶ Immunisation
- ▶ Register and recall
- ▶ Self management education
- ▶ Acute and chronic condition management





Arranging Home Health Assessments

Home Health Assessments by experienced nurses can be arranged through Canning Division for a reasonable fee.

The Division offers a comprehensive service to its members that includes extrapolating 75+'s off the database, generating letters, booking appointments, liaising with the GP, working with practice nurses and linking patients with Carelink services in consultation with GP.

Assessments cover – general health, medications, home safety, nutrition, mini-mental, depression scale, mini falls and daily activities needs assessments. For more information contact the Division.

How Canning Division supports local practice nurses

Canning Division provides:

- ▶ Mentoring support
- ▶ On-going education and information
- ▶ Networking opportunities
- ▶ Assistance with orientation and induction

A Practice Nurse Support Officer is available at the Division to visit practice nurses on site as well as provide phone support as required.

Practice nursing – an exciting career path

General Practice nursing is emerging as an exciting career path.

Practice nurses have the best of both worlds. While enjoying a degree of autonomy, they also benefit from the support of practice colleagues and working within the team environment of general practice.

Practice nurses also enjoy reasonable hours that fit in with family commitments.

For information about becoming a practice nurse call the Practice Nurse Support Officer at Canning Division.

General Practitioners and Practice Managers

A general practice nurse can be a valuable addition to your practice.

Canning Division has established a register of nurses interested in working in practices in the Canning region.

For information about employing or contracting a nurse in your practice, call the Practice Nurse Support Officer at Canning Division.



ISO 9001 QEC 14616
Standards Australia

Canning Division of General Practice
1133 Albany Hwy Bentley WA 6102
PO Box 268 Bentley WA 6982
Tel (08) 9458 0505 Fax (08) 9458 8733
admin@canningdivision.com.au