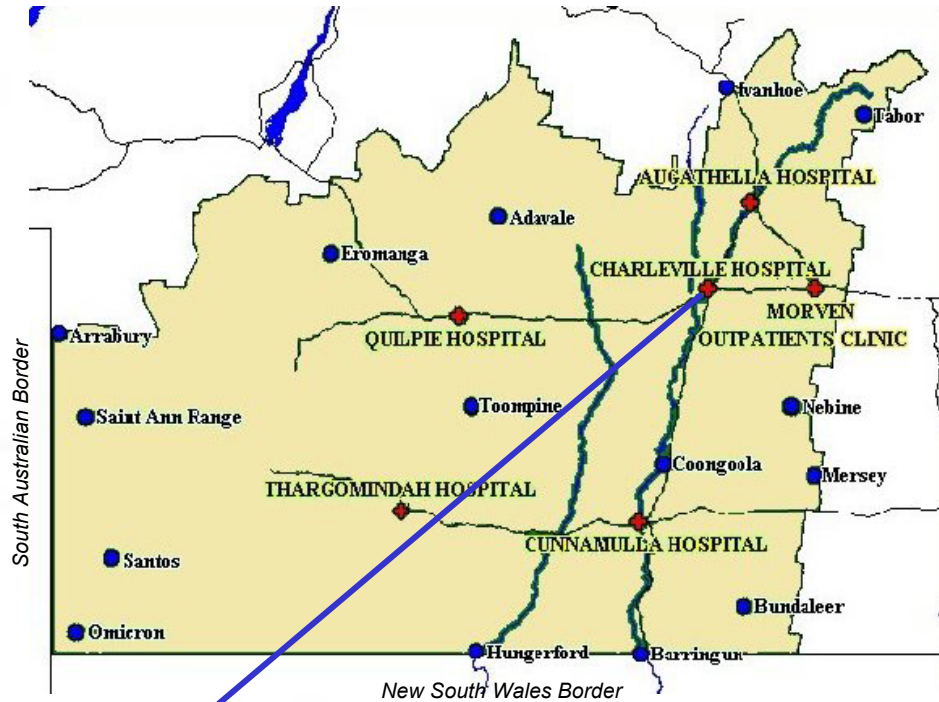
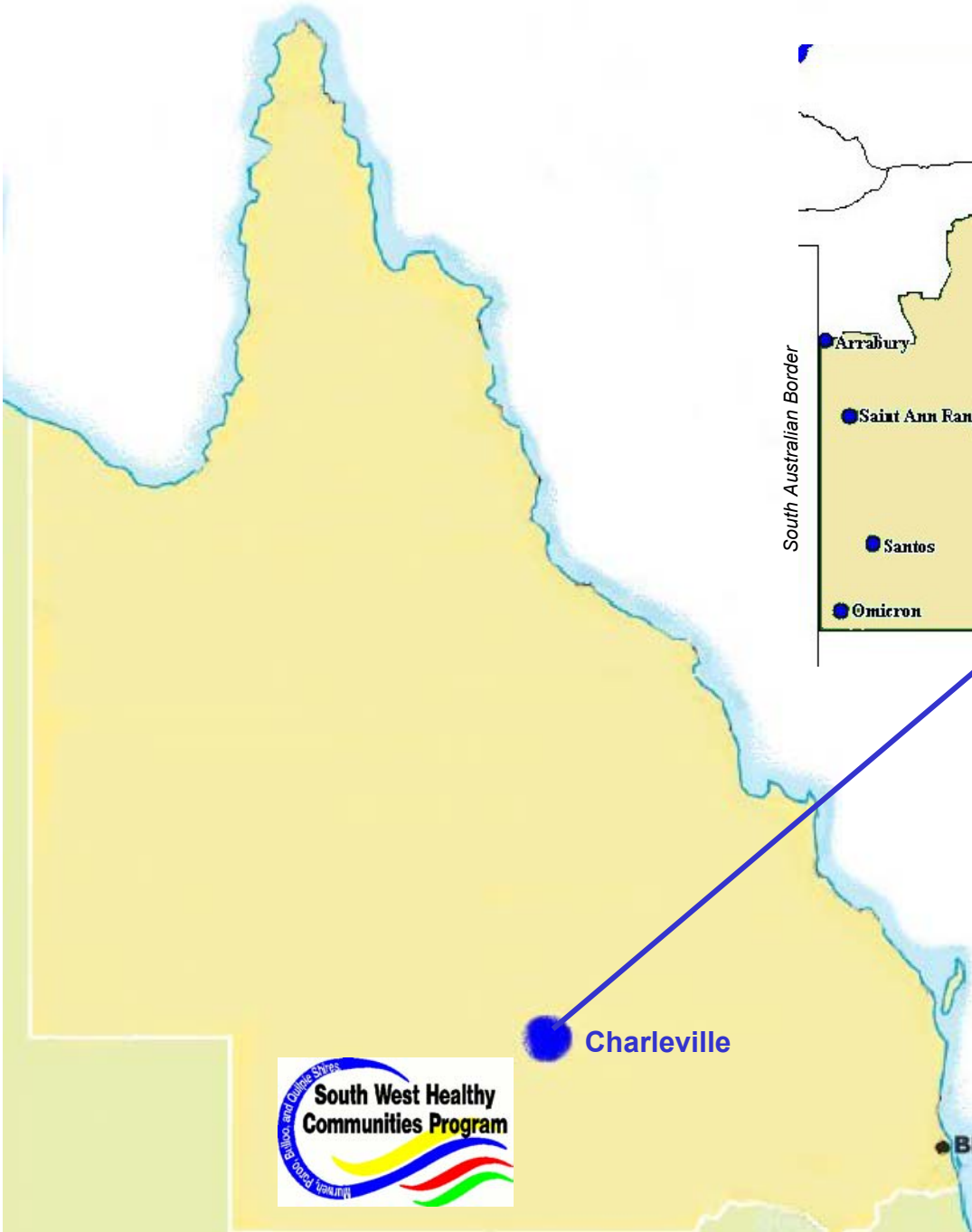


# Delivering Integrated Primary Health Care In Remote SW Queensland with Meaningful Youth Participation

**Presented by**  
Brenda Tait  
Louise Sanderson  
Dr Sian Ford





# South West Healthy Communities Program

## A Regional Health Service

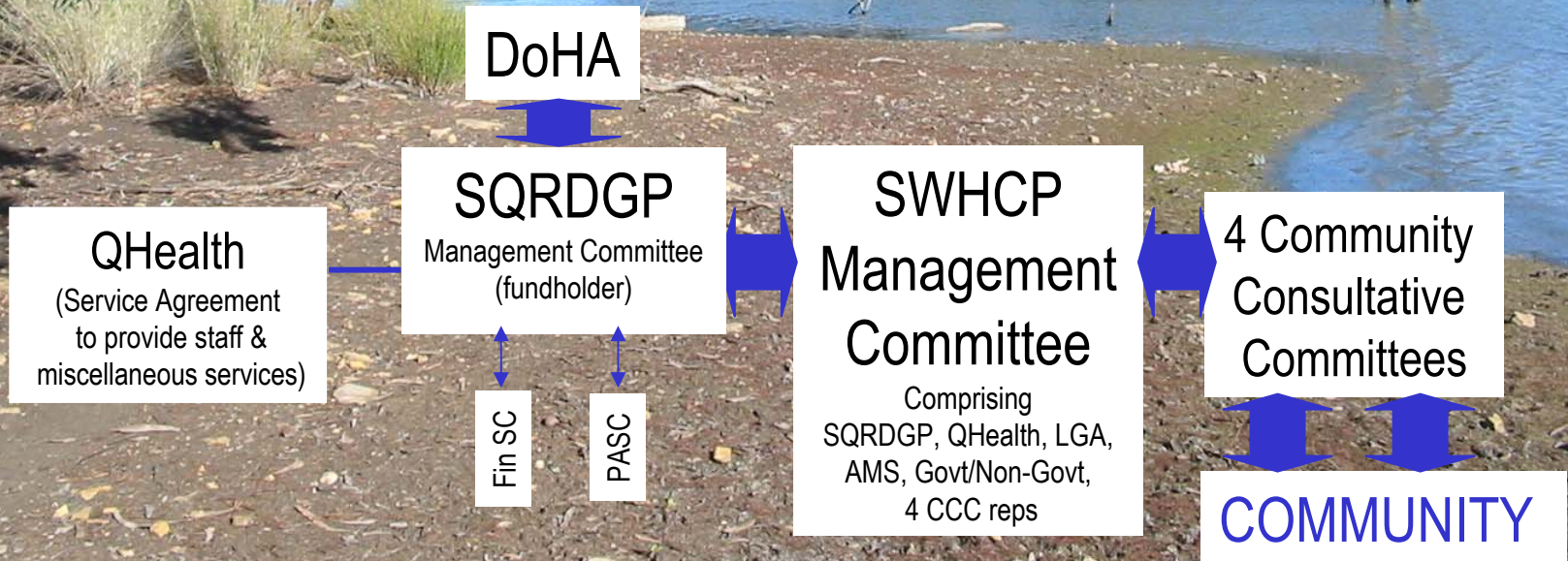
*Enhancing Primary Health Care in Rural Communities*

- **Adolescent Health Program**
- **Domestic Violence Program**
- **Healthy Communities Program**
- **Mental Health Program**
- **Healthy Ageing Program**
- **Governance, Integration & Collaboration Program**





# Governance Model and Management Structure



# Aim

**To decrease risk taking behaviours in young people**

## Program Outcomes

- Youth Council
- Resourceful Adolescent Program
- Youth website
- School Suspension Program
- South West Outback Festival For Youth
- Youth Clinic



WIPE

SHAKE



## Summary

- Evaluation 2003/04
- Lapsing Program/Renewal Process
- Future delivery



**South West Healthy  
Communities Program**

**PO Box 219**

**72 King Street**

**Charleville Qld 4470**

**Ph: 07 4654 4384**

**Fax: 07 4654 4389**

**Email: [swchrhs@bigpond.com](mailto:swchrhs@bigpond.com)**